

Purbeck Stone Resource Area Landscape & Visual Sensitivity Study

1. Introduction

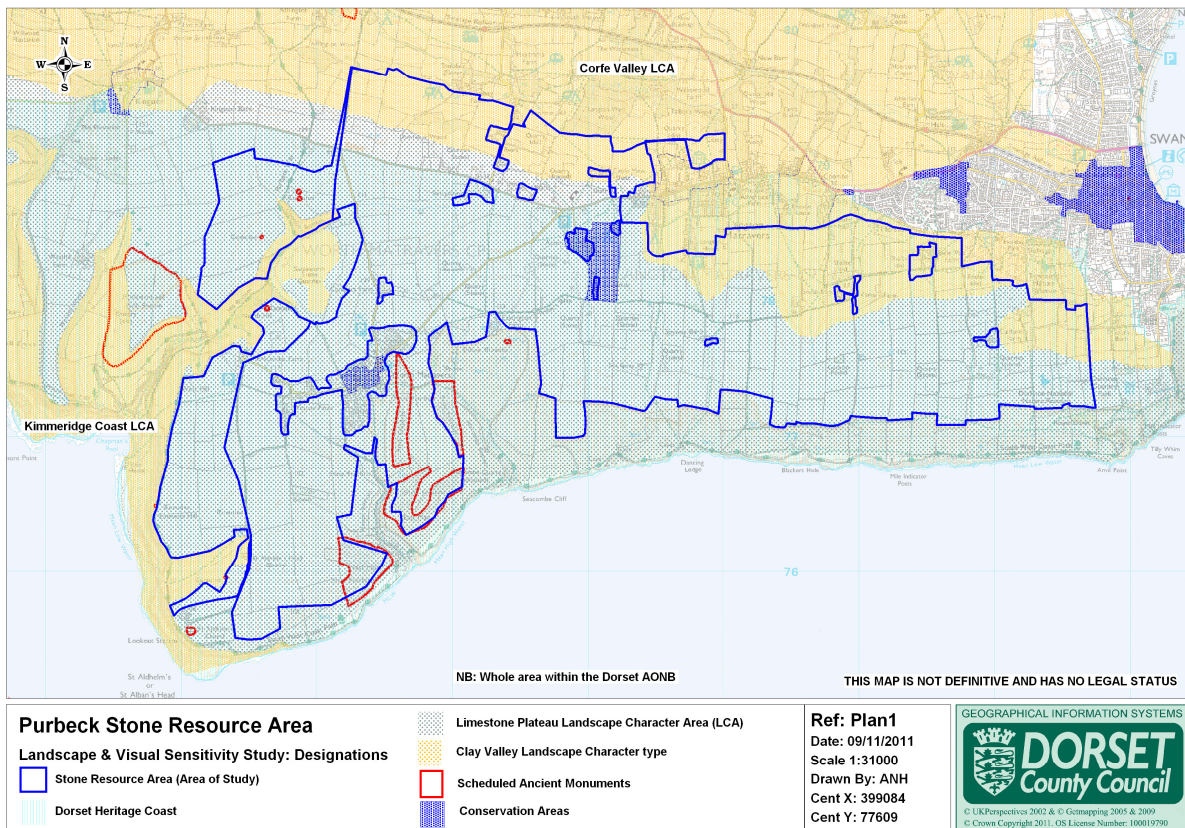
The Bournemouth, Dorset and Poole Minerals Core Strategy proposes to support the continued supply of Purbeck Stone. The purpose of this study is to consider the landscape and visual sensitivity of the area within which Purbeck Stone occurs. The Purbeck Stone Resource Area was presented in the Revised Draft Minerals Core Strategy (July 2011). The resource area showed where the stone occurs (both Purbeck and Purbeck-Portland bearing areas), with built development and the Special Area of Conservation excluded. This study takes this resource area as the base and provides a detailed assessment in order to identify an appropriate basis from which to develop an area of search and supporting policies. This is based on landscape and visual sensitivity as this has been identified as a key consideration for Purbeck Stone, being located within the Dorset AONB and Heritage Coast.

2. The purpose of this assessment

1. Provide a greater understanding of the landscape and visual sensitivity of the Purbeck Stone Resource Area (SRA).
2. To assess if, based on this understanding, modifications to its boundaries are justified on landscape and visual grounds.

Plan 1

Map of SRA with AONB, Heritage Coast, Scheduled Ancient Monuments, Conservation Areas and Landscape Character Areas¹



¹ 'Conserving Landscape Character' Dorset AONB Landscape Character Assessment 2008

3. Methodology

The assessment is based broadly on best practice methodology as set out in the 'Guidelines for Landscape and Visual Assessment' (2nd Edition, 2003). The landscape baseline of the study area is provided in the Dorset AONB 'Purbeck Stone Extraction in the Dorset AONB'² report which was produced to inform the development of the Minerals Core Strategy.

This outlines the key characteristics of the area which falls mainly within the Purbeck Limestone Plateau Landscape Character Area (LCA) with a smaller area within the Corfe Valley LCA. A very small area also falls within the Kimmeridge Coast LCA.

The landscape of the SRA was assessed at a desk study stage to determine where the main sensitivities were likely to be in relation to future quarrying. It was at this stage that two 'zones' within the SRA were determined and which are important to assess due to their sensitivity;

- ◆ The south and western coastal 'open access corridor' along which runs the upper and lower South West Coast Path.
- ◆ The northern part of the SRA which is open to south facing views from the elevated Purbeck ridge along which runs the Purbeck Way.

A number of key viewpoints, mainly within these two zones, were assessed to determine their sensitivity based on criteria set out in 4. below. The impacts on each of these viewpoints was then analysed using a set of criteria (see 5. below) based on the scale and nature of the impact, balanced by the overall level of sensitivity, to arrive at a final 'significance of impact' assessment. In order to assess the potential impacts at this 'second' stage it is assumed and visualised that in each 'view shed' a small-scale open quarry (approximately 2 hectares) is present along with the associated plant, stockpiles and overburden mounds currently associated with such a quarry in Purbeck.

The whole of the SRA lies within the Dorset AONB and the majority also within the Dorset (Purbeck) Heritage Coast³. In national landscape policy terms this automatically heightens the areas sensitivity as the AONB shares the highest status of protection in relation to landscape and scenic beauty and is the equivalent of National Parks in this regard.⁴ This and the fact a significant part of the coastal strip is within 'open access land', is reflected in the both the 'viewpoint sensitivity' and 'significance of impact' assessments below. People's expectations of landscape quality and condition are greater in such sensitive landscapes especially as the public generally have more leisure time now to appreciate scenic quality. This does not mean quarrying should be automatically limited; in fact it is a key part of the cultural and historic evolution of the Purbeck landscape. It does however mean there is now a greater expectation that it should be well planned and that it helps to conserve and enhance landscape character.

Worth Matravers and Acton, as the only two built up areas which are surrounding by the SRA, are given specific attention in the assessment in the selection of key views around these areas.

4. Visual resources and sensitivity

The degree to which people are sensitive to and concerned about landscape change depends on several factors, as advised in the 'Guidelines for Landscape and Visual Impact Assessment':

- The visibility of the landscape (location & context of viewpoints)
- The number of people who see the landscape (their expectations, occupation, activity)
- The nature of the viewing experience (importance of the view, popularity & facilities for its enjoyment, period viewed & frequency of use/sequential)

- ◆ The visibility of the landscape.

The visibility of a landscape depends on the topography, the presence of elements that block or screen views and the amount of the landscape accessible to potential viewers. The SRA lies

² Available at www.dorsetforyou.com/mcs

³ **Purbeck Heritage Coast**

Heritage Coasts cover the finest stretches of undeveloped coast in England and Wales and were defined by local authorities in conjunction with the then Countryside Commission (now Natural England). Heritage Coast is a non-statutory designation. The objectives include: to conserve, protect and enhance the natural beauty, biodiversity and geology of the coasts; to facilitate and enhance their enjoyment and understanding and appreciation by the public.

POLICY CA 7 in the District Council Adopted Local Plan: PURBECK HERITAGE COAST

Development within the Purbeck Heritage Coast will not be permitted unless:

- (i) it is located within a defined settlement boundary or its location in the countryside is essential;
- (ii) it would not adversely affect the undeveloped character of the coast, the natural beauty of the coastal landscape, or the ecological or geological interest of coast; and
- (iii) it would not detract from the quiet enjoyment of the coast for information recreation.

⁴ Planning Policy Guidance 7 'Countryside & Rural Economy'.

predominantly within the Purbeck Limestone Plateau Landscape Character Area⁵ and as such it is a predominantly flat landscape which does limit some long-range views. However it is a distinctive characteristic of the SRA that it slopes away to varying degrees around its south and west fringes and north where it forms a ridgeline transition zone with the Corfe Valley Landscape Character Area⁶. From the elevated areas to the north, especially along the Purbeck ridge, and along the coastal strip it therefore becomes more visible. There are other key viewpoints within the flatter central parts of area, such as along Priests Way, but their sensitivity is considered to be slightly less due the slacker angles of view.

♦ The number of people who see the landscape.

It is assumed for this study that there is no hard data available on the number of people viewing this particular part of the Purbeck landscape. However, it can be inferred that because the area is a very popular tourist destination, as well as being well used by locals, for a range of recreational activities, there are large numbers of people who see the area.

These are therefore highly sensitive 'receptors' with high expectations of the landscape, its quality, condition and tranquillity. This in turn increases the sensitivity of the landscape to change and especially to open quarrying. This also fully understands the cultural significance and value of small scale historic stone quarrying in Purbeck.

♦ The nature of the viewing experience.

This part of Dorset is a major tourism area and many people who live in the area enjoy the views of countryside and the accessible opportunities for walking, cycling, mountain biking or horse riding. This means that people experience and enjoy this popular landscape all year round. This is also likely to mean that people are used to seeing the landscape generally as it is and are not likely to react favourably to dramatic changes taking place.

Many people visit the area specifically to enjoy the scenery and the panoramic views. Residents and visitors alike gain significant benefit from the quality of this landscape as they enjoy their visit, travel through the area or pursue recreation. The Purbeck Way and the upper and lower SW Coast Paths are very popular and well used. The whole area around Worth Matravers and St Aldhelms Head peninsula is a popular countryside destination in the county. The importance of people's sequential viewing experience is critical as they pass through these areas and along these routes.

90 photos in total were taken to help determine the sensitivity of the landscape and to make decisions on the recommended boundary modifications. The visual sensitivity of 60 viewpoints, mostly but not exclusively, along the two main zones, are assessed in Table 1 below. The other 30 photos have been used as a record of the landscape, to obtain alternative views across the area and to assist in the assessment process. These are noted but not assessed in the table below.

NB: Photo locations shown on Plans at end of report.

Table 1 Viewpoint sensitivity

Visibility issues defined as high, high/medium, medium/high, medium or low based on these criteria:

A*= Landscape visibility (location, context of viewpoints & the amount of the landscape accessible to viewers)

B*= Number of people seeing the landscape (their expectations, occupation, activity)

C*= Nature of viewing experience (importance of the view, period viewed & frequency of use/sequential)

**** Overall viewpoint sensitivity defined as High, Medium/High, Medium, Low based on these criteria:**

High:

- . Users of outdoor recreational facilities whose attention is focused on the landscape.
- . Communities where the proposal results in changes in the setting or valued views enjoyed by the community.
- . Occupiers of residential properties with views affected by the proposal.

Medium:

- . People engaged in outdoor sport or recreation whose attention maybe focused away from the landscape.
- . People travelling through or past the proposal in cars, or other transport routes.

Low:

- . People at their place of work, or engaged in similar activities, whose attention maybe focused away from the change in view.

No of photo viewpoint	Location	Description	A*	B*	C*	Overall viewpoint sensitivity**
2157-2159	Purbeck Ridge. Top of Rollington Hill on the Purbeck Way.	Three panoramic views from the same elevated location looking south towards the north facing slopes of the western end of the SRA. These slopes form part	H/M	H	H/M	High/Medium

⁵ 'Conserving Landscape Character' Dorset AONB Landscape Character Assessment 2008

⁶ 'Conserving Landscape Character' Dorset AONB Landscape Character Assessment 2008

		of the Corfe Valley Landscape Character Area ⁷ . They form a series of small-scale fields, paddocks, hedges and small copses which contribute to an intimate patchwork landscape and make up a significant proportion of the overall view across the valley despite being 1.5 miles away.				
2160-2161	Purbeck Ridge. Top of Brenscombe Hill on the Purbeck Way. At a milepost.	Two panoramic views from the same elevated location looking south towards the north facing slopes of the SRA. These slopes form part of the Corfe Valley Landscape Character Area. They form a series of small-scale fields, paddocks, hedges and small copses which contribute to an intimate patchwork landscape and make up a significant proportion of the overall view across the valley despite being 1.5 miles away. The existing quarry service areas can be seen sitting just below the skyline which helps to reduce their visual impact.	H/M	H	H/M	High/Medium
2162-2164	Purbeck Ridge. Top of Ailwood Down on the Purbeck Way. At a milepost and within National Trust land.	Three panoramic views from the same elevated location looking south towards the north facing slopes of the eastern end of the SRA. These slopes form part of the Corfe Valley Landscape Character Area. They form a series of small-scale fields, paddocks, hedges and small copses which contribute to an intimate patchwork landscape and make up a significant proportion of the overall view across the valley despite being 1.5 miles away. The skyline ridge and sea beyond and to the south of the existing quarries forms a backdrop to the SRA from these views.	H/M	H	H/M	High/Medium
2165-2167	Small paddock just south of cemetery near Mount Pleasant, Langton Matravers of Crack Lane.	Series of three panoramic views from the edge of this small paddock which forms part of the wider Corfe valley landscape. Two of the views look southwest up hill towards the houses at Mount Pleasant and the other looks north over the cemetery towards the Purbeck ridge. The whole of the SRA covers this view.	M	M	L	Medium
2168	On a public footpath 330m west of the walker's car park near Renscombe Farm, Worth Matravers.	This view looks southeast towards Worth Matravers with the silo at Weston Farm being visible on the horizon. The well-used path links the SW Coast path with the popular walker's car park. The view over looks the typical flat, open and treeless landscape of the limestone plateau with its regular arable fields subdivided by characteristic dry stonewalls.	M	M/H	M	Medium/High
2169	On the SW Coast path at West Hill above Chapmans Pool.	View looking south along the path and out to sea on the horizon. The viewers attention is drawn west towards the dramatic panoramic views of the Kimmeridge coast landscape and out to sea over Chapmans Pool rather than east. This focus west is aided by the visual 'barrier' and foreshortening of the view created by the dry stone wall and the fact the path is at a lower level here than this wall.	M/L	H	M	Medium
2170	On the SW Coast path at Emmets Hill.	View looking east across the open limestone plateau landscape towards Worth Matravers from the Coast path. Despite the main focus of attention being drawn to the west, the lack of dry stone wall (or its poor condition) and the fact the path runs at a similar level as the adjacent field, the viewers attention is drawn more to the east and broadens	H	H	M/H	High

⁷ 'Conserving Landscape Character' Dorset AONB Landscape Character Assessment 2008

		out compared with view 2169.				
2171	On the SW Coast path on the southern slopes of Emmets Hill.	View looking east towards St Aldheims Head quarry. Despite the focus of attention being drawn to the west, the lack of dry stonewall and the fact the path runs at a similar level as the adjacent field, the viewers attention is broadened out compared with view 2169. The adjacent field in the draft SRA is more prominent in this view due to its rolling and rounded profile.	H	H	M/H	High
2172	On the SW Coast path on the southern slopes of Emmets Hill.	View looking directly south towards the coast guard cottages on St Aldheims Head, a popular landmark feature and focal point on the SW Coast path. The SRA is seen as a narrow strip right on the horizon. The view is dominated by the dramatic steep dry valley landform which sweeps down to the coastal cliffs and under cliffs. This complements and contrasts with the panoramic and extensive seaward views to the south and west to create an all round viewing experience.	M/H	H	M	Medium/High
2173	On the SW Coast path near the St Aldheims Head coast guard cottages.	View looking north towards Emmets Hill with the dramatic Kimmeridge coast cliffs and dry steep valley dominating this scenic view. The SRA is visible along the middle horizon stretching away east from the cliff top into the flat plateau landscape of open fields.	M/H	H	H	High
2174	On the SW Coast path near the St Aldheims Head coast guard cottages.	View looking northeast towards St Aldheims Head quarry and Worth Matravers. The SRA forms the immediate open foreground as well as then stretching out across the flat limestone plateau landscape therefore forming a major component in the view.	H	H	M/H	High
2175	On the SW Coast path next to the coast guard lookout station on St Aldheims Head.	View looking east towards Seacombe Cliff and the sea over the coastal limestone grassland slopes with the SRA fields forming the foreground views. St Aldheims Head is a popular landmark feature and focal point on the SW Coast path and is often used a stop off location on longer routes as well as being a specific destination.	H	H	H	High
2176	On the SW Coast path between St Aldheims Head and Winspit.	View looking directly north along a typical stone wall field boundary across the coastal limestone grasslands towards the SRA. This area forms the middle horizon beyond the pale shaded grass fields in the foreground. The view is typically seen as the viewer passes along the SW coast path corridor.	M	H	M/H	Medium/High
2177	As above looking northwest with the SRA on horizon.					
2178	On the SW Coast path between St Aldheims Head and Winspit.	View looking north from the Coast path towards the distinctive and prominent feature of West Man hill with its characteristic historic strip lynchets. The SRA lies just beyond the wire fence in this view and runs up and over the horizon. West Man contributes to the overall scenic view 'in the round' despite most viewers focus being drawn east and south along the dramatic coastal and seaward views.	H/M	H	H	High
2179	On the SW Coast path to immediate west of Winspit.	View looking northeast over typical coastal scrub/ limestone grassland towards East Man hill which dominates the skyline. It also creates a distinctive landmark and contributes significantly to the overall scenery in this view. The SRA envelops the top half of East Man when seen from this location. Winspit cliffs are visible in the middle right of the view.	H	H	H	High
2180	On the SW Coast path at Winspit.	View looking north up Winspit Bottom valley towards Worth Matravers which is just visible on the right hand horizon.	M/H	H	H/M	High/Medium

		The side limestone grassland slopes of West Man can be seen in the foreground and the SRA is prominent in the view as it makes up the skyline. The majority of the ploughed arable fields on the skyline fall within the area and therefore form a significant component of the overall view.				
2181	As below looking west up side valley near Quarry Cottages					
2182/83	On the public footpath/track in Winspit Bottom.	View looking south towards West Man near the top (north) end of the Winspit Bottom on the very popular route from Worth Matravers to Winspit; both popular destinations. The distinctive strip lynchets on West Man are very clear in this scenic view and the majority of the limestone grassland slopes of West Man and the fields to the right in this view, are covered by the SRA. It therefore forms a significant component of the overall view and in particular dominates the skyline.	H	H/M	H	High
2184	As above looking west; similar view to 2186					
2185	On public footpath to Winspit Bottom just south of Worth Matravers.	View looking northeast to southern edge of the village illustrating the abrupt and visible urban/rural edge to this part of the settlement. The draft SRA runs right up to the village edge (the rear garden boundaries to properties in this view) and is therefore overlooked by these properties and from the well used footpath. The SRA therefore dominates and forms a significant component of the foreground view in this location.	H	H/M	H/M	High/Medium
2186	On public footpath to Winspit Bottom just south of Worth Matravers.	View looking east towards the elevated limestone grassland ridge which runs south from Worth Matravers. Its distinctive strip lynchets can be seen on along the steep west facing slopes. The SRA forms a key component in this view, forming the skyline view of the ridgeline as well as the ploughed arable middle ground view.	H	H/M	H	High
2187	On a public right of way (Bonvills Road) just south of the coast guard cottages.	View looking northeast towards Worth Matravers with Weston Farm on the immediate left of the view. The fields in the view are all within the SRA running up to the village edge and help to physically and visually link Bonvills Road, Weston Farm and the rest of the village edge. This area therefore dominates and forms a significant component of the viewpoint experience.	H/M	M/H	H	High/Medium
2188	On a public right of way (Bonvills Road) just south of the coast guard cottages.	View looking east towards the southern end of Worth Matravers and over to the ridgeline which extends south from the village. The distinctive strip lynchets are visible along the steep west facing slopes of this ridgeline landform. The whole of the limestone grassland landscape in this view is within the SRA therefore forming a key component of the overall view experience. It has a strong influence on the setting of the Worth Matravers and its context forming the skyline, middle and foreground of the view.	H	M/H	H	High
2189	View southwest from Weston Road over same fields as 2187/88; SRA also on horizon.					
2190-2192	At lay-by just north of Compact Farm on C road linking Worth Matravers and the B3069.	Three panoramic views from the same location looking from north, west and southwest. They range from views to the nearby Swanworth Quarry and longer views out across the open landscape to the Kimmeridge coast, Houns-tout and the sea. The draft SRA runs along the foreground and middle ground view in all views and extends along just below the horizon in views 2191 and 2192. These fields all form a component of the characteristic open	H/M	M	H/M	Medium/High

		field pattern in this part of the limestone plateau landscape. The SRA therefore forms a significant element of the overall view 'in the round' despite the sequential viewing experience for most who look out across this landscape as they move along the lane. The existing quarry already creates a visible impact on this view.				
2193-96	Parish council walker's car park on edge of Worth Matravers.	Four panoramic views from same location in the car park extension. Views from this well used facility form a characteristic open and wide vista from the north, west and south across the limestone plateau landscape. The dry stone wall field boundaries are seen in the foreground of views out to the Kimmeridge coast and the sea. The vast majority of the landscape both near and far in this panoramic vista falls within the SRA. It therefore has a significant influence on the overall view composition from a popular viewpoint.	H	H	M/H	High/Medium
2197	From side of road in Worth Matravers just north (30m) of the Square & Compass.	View looking south down the dry valley landform which sweeps away from the village towards Winspit Bottom, Winspit and the sea beyond. These fields form part of the characteristic grassland valley landform on the southern edges of the limestone plateau. Distinctive and prominent strip lynchets are clearly visible on the steep valley sides creating a key component of this historic and scenic view. The whole of the landscape in this view, from the immediate foreground out to West Man hill on the horizon, lies within the SRA. The area also lies adjacent to the Worth Matravers Conservation Area. (The foreground was within it up to 2009). The area therefore has a strong influence on the overall view composition forming a key component of existing landscape character.	H	H	H	High
2198	As below but looking south; similar view to 2197.					
2199	From public footpath on southeast edge of Worth Matravers.	View looking north back up the limestone grassland slope towards the village and properties along lane to north of the Square & Compass (from lane photo 2197 was taken). The steep slopes to the dry incised valley form a distinctive landscape feature abutting and sweeping away from the village edge contributing to its overall character and landscape setting. The area also lies adjacent to the Worth Matravers Conservation Area. (The foreground was within it up to 2009). The whole landscape is 'tilted' towards the viewer making it more prominent. The SRA covers the whole landscape in this view making it a significant component of the viewing experience.	H	H/M	H	High
2200	On public footpath south of Worth Matravers on elevated plateau between Winspit Bottom valley and Seacombe Bottom valley.	View looking north towards the village edge on the horizon across a flat field which forms part of the wider plateau top landscape. The main focus of attention from this popular route and from this viewpoint, is in a southerly direction along the dramatic incised valley landscape towards the coast around Seacombe Bottom and Cliff and beyond to the sea. Despite the whole of the foreground view being in the SRA it is viewed whilst passing along the path with most viewers attention being drawn in the other directions.	M/H	H/M	M	Medium/High
2201-2204	On public footpath south of Worth Matravers	Series of four panoramic views in the same location on this popular route on the elevated plateau landscape. There	H	H/M	H	High

	on elevated plateau between Winspit Bottom valley and Seacombe Bottom valley. As 2200.	are wide views out across the open limestone grassland towards Seacombe Bottom, of the incised valley and out to sea as well as out towards St Aldheims Head. The open elevated landscape forms a key part of the overall scenery and character in this part of the limestone plateau. The SRA forms the foreground view in 2201 and 2204, dominating the whole of the view including the skyline in both 2202 and 2203. It therefore dominates and forms a significant component of the view in this elevated location. It also influences the setting of the Seacombe Bottom, a popular destination, key feature and focal point in the area.				
2205	On same public footpath as 2201-2204 on down slope in Seacombe Bottom valley.	View looking northeast up to the head of the dry valley which leads down to Seacombe Bottom. Eastington Farm is on the right hand horizon in this view. The slopes form a key component of the wider landscape and views in this popular location. The SRA forms a major element of the view on the skyline as it covers the field just below the wooded horizon to the right of the view. In this way it influences the setting of Seacombe Bottom and the wider valley landscape.	H	H/M	H	High/Medium
2206	On SW Coast path lower route just above Seacombe Cliff.	View looking southwest over Seacombe towards Winspit and East and West Man, forming key rounded profiles in the middle and far distance. The view is representative of the dramatic limestone cliffs in this part of the plateau landscape showing the strong relationship between the coastal cliff tops and the limestone grasslands which sweep inland from them. The SRA covers the majority of the upper slopes of both East and west Man and therefore has a significant influence on the overall view composition in this very popular destination and 'stopping' point along the Coast path, particularly as much of it is on the skyline.	H	H	H	High
2207	On SW Coast path lower route just above Dancing Ledge.	View looking northeast up a well used and worn public footpath across the limestone grassland slopes towards the SW Coast path upper route. This is a typical view of the landform and landcover which characterises the limestone grasslands along the coastal fringes of the plateau. The SRA, also typically, is not readily visible from this viewpoint along the lower SW Coast path route between Seacombe Cliff and Durleston Country Park.	L	H	L	Medium
2208	View looking southeast over Dancing Ledge; draft SRA not in this view.					
2209	On SW Coast path lower route just west of the Mile Indicator Posts east of Blackers Hole.	View looking north up the limestone grassland slopes towards the SW Coast path upper route which runs along near the horizon. This is a typical and representative view of the landform and landcover which characterises much of the limestone grasslands along the coastal fringes of the limestone plateau. The SRA, also typically, is not readily visible from this viewpoint along the lower SW Coast path route between Seacombe Cliff and Durleston Country Park.	L	H	L	Medium
2210	On public footpath to California Farm just north of the SW Coast path upper route on western edge of	View looking northeast towards Swanage and the Isle of Wight with the Needles just visible on the far right horizon in this view. The small scrubby fields and paddocks are typical of this transitional area between the exposed open coastal slopes to the south and	M	H/M	M	Medium

	Durleston Country Park.	the flat plateau landscape to the north of regular shaped fields with its characteristic pattern of dividing dry stone walls. The upper SW Coast path runs through this landscape along the junction between the flat and sloping landscapes. The SRA lies just beyond the first line of wall visible in the middle distance and forms part of the horizon in the middle of the view. It provides a limited contribution to the overall view as much of the view is broken up by the varied foreground and scrubby vegetation as well as the flat nature of the landscape. This reduces the angle of view 'into' the area.				
2211	On SW Coast path upper route at the junction between this path and the public footpath north to California Farm.	View looking northwest along the line of the upper path across the open, elevated and exposed grassland at the southern edge of the limestone plateau. The SRA lies just beyond the dry stonewall which runs along the far right of the view on the horizon and therefore has a limited contribution to the overall view.	L	H	M	Medium
2212	Not used					
2213	On SW Coast path upper route at the junction between this path and the public footpath north to Herston.	View looking north towards wooded area around California Quarry which lies on the horizon in the centre of the view. The southern edge of the SRA follows the line of the post and wire fence running across the middle of the view. It therefore contributes significantly to the overall view as it in effect sits right on the skyline.	M/H	H/M	H/M	High/Medium
2214	Typical representative view of the landscape along the upper coast path route					
2215	Typical representative view of the landscape along the upper coast path route					
2216	On SW Coast path upper route above (north) of Blackers Hole and south of Cuckoo Pound copse.	View looking east along the line of the dry stonewall which marks the approximate boundary between the flat plateau landscape to the north and the sloping coastal zone to the south. This is a typical and representative view of this landscape as the viewer moves along this coastal access corridor with many open views available into the SRA which lies to the left (north) of the wall. In this way the SRA has a significant influence on the overall view composition and the sweeping and open view 'in the round'. This influence is made more significant in that the area composes much of the landward skyline as well as making up much of the fore and middle ground in this northerly view.	H	H	H	High
2217	On SW Coast path upper route between Dancing Ledge and Blackers Hole.	View looking west along line of the dry stonewall which marks the approximate boundary between the flat plateau landscape to the north and the sloping coastal zone to the south. In this case one of the characteristic incised valleys sweeps up from the coast cutting into the plateau to create a dramatic rolling landscape. As with 2216 this is a typical and representative view of this landscape as the viewer moves along this coastal access corridor with many open views available into the draft SRA which lies to the right (north) of the wall. It is also on the horizon beyond the hedge/wall which runs across the view along the top edge of the incised valley (which is outside of the SRA). In this way the SRA has a significant influence on the overall view composition and the sweeping and open view 'in the round' as it lies not only on the horizon but forms elements of the closer foreground in this view.	H	H	H	High

2218	Typical representative view of the landscape along the upper coast path route					
2219	Typical representative view of the landscape along the upper coast path route					
2220	On SW Coast path upper route just west of the junction with public footpaths from Langton Matravers and Dancing Ledge.	View looking northwest along the line of the upper path towards the junction of paths which converge in the middle of the view. The view illustrates the open treeless landscape which characterises the limestone plateau. The SRA forms the immediate foreground to the left (west) of the post and wire fence as well as making up all of the left and central parts of the view including the fields on the skyline. In this way it contributes significantly to the overall viewpoint composition and the scenery 'in the round' including the coastal view, as the viewer moves through this coastal access corridor landscape.	H	H	H	High
2221	On SW Coast path upper route immediately south of Sea Spray House.	View looking directly north towards Sea Spray house and a quarry overburden mound associated with Blacklands Quarry. This is a typical view along this part of the limestone plateau from the upper route with the foreground being contained by a dry stonewall. This acts as a focus of attention and provides a framework for northerly views across the flat plateau landscape towards an often open skyline. The whole of the view lies within the SRA which stretches away in all directions to the horizon, therefore contributing significantly the overall view 'in the round'. The experience the viewer obtains as they pass through the landscape comprises a strong draw to the south, towards the coast and sea. However the sweeping all round views of the flat open plateau landscape to the north, the open skyline and regular linear feature provided by the wall, all combine to make up a coordinated and important scenic experience.	H	H	H	High
2222	On SW Coast path upper route between Seacombe Cliff and Dancing Ledge.	View looking southwest across one of several characteristic incised grass and scrub valleys which cut into the plateau landscape. The flat plateau landscape between these valleys often form the skyline to views from the Coast path. The skyline in this view is part of the elevated plateau on the eastern side of the Seacombe Bottom valley. The area is covered by the SRA and as such significantly influences the view particularly as it lies right on the visually dominant skyline. It therefore forms a key component of the overall view 'in the round'.	H/M	H	H/M	High/Medium
2223	View west over Seacombe Bottom; similar views captured in 2204 & 2226.					
2224	View east along wall; similar view & issues captured in 2222					
2225	On public footpath east of Eastington Farm near Worth Matravers.	View looking south across the open and exposed plateau landscape out towards the sea on the horizon. The view forms part of an open, wide and treeless panoramic vista across the landscape with its characteristic stone walls forming key features. The whole of the area (apart from the wedge on the right; west, of the view) falls within the SRA including most of the left (eastern) skyline. In this way it contributes significantly to the overall view composition 'in the round'.	H	M/H	H/M	High/Medium
2226	On public footpath just west of Eastington Farm and Priests Way near Worth Matravers.	View looking south down towards Seacombe Bottom and out to sea. This is a typical panoramic and open view of the deeply incised dry valley which sweeps away from the village towards Seacombe Bottom, the cliffs and the sea. The characteristically flat plateau	H	H/M	H/M	High/Medium

		either side of the valley can be seen to the left and right of the view with the historic strip lynchets visible on both side slopes. The SRA covers the whole of the foreground of this view down and past the post and wire fence line to the first break in slope beyond (south) of this fence.				
2227	On public footpath at a stile, on eastern side of Worth Matravers just west of Abbots Way (a residential property on the right of the view).	View looking along the footpath next to the road east towards Eastington Farm, which lies in the wooded area on the right distant horizon. The view across the small paddock, sub divided by walls, hedges and fencing, is typical of many around this northern edge of the village. The SRA washes over this area forming the foreground and middle centre ground in the view. It therefore has some influence on the viewpoint composition on this edge of the settlement.	M/H	M/H	M	Medium/High
2228	On public footpath at a stile, on eastern side of Worth Matravers just west of Abbots Way.	View looking south, from same location as 2227, across the northern end of the flat plateau upon which some of the village is developed. This plateau area subdivides the two incised valleys, one of which leads down to Seacombe Bottom and the other down to Winspit Bottom. This view is typical of the wide, open and extensive vista available from these treeless plateaus out to sea on the distant horizon. The SRA forms all of the landscape in this view and therefore contributes significantly to the overall viewpoint composition and setting of the village. The view looks over the same plateau as viewpoint 2200 except in the opposite direction.	H	M/H	H/M	High/Medium
473	View west from new development south of Compact Farm towards Weston Farm. Similar view and issues as viewpoints 2194 & 2105.					
474	On Weston Lane near Weston Farm, Worth Matravers.	View looking northeast towards edge of village with the field in the view sloping down right (south) to Weston Lane. This field separates the western village edge and the Weston Farm environs. It is all within the SRA and therefore forms a key component of the overall view. The lane itself forms a key link out to the popular walkers car park near Renscombe Farm.	H	M/H	M/H	Medium/High
475	On Weston Lane near Weston Farm, Worth Matravers. View looking southeast towards edge of village. Similar view and issues as viewpoints 2187 & 2188 with SRA in foreground and on skyline.					
476	On Weston Lane north of Weston Farm, Worth Matravers.	View looking northeast towards Court Farm, which is visible just left of skyline, across the typical limestone plateau landscape of regular shaped fields sub divided by dry stone walls. The SRA covers the whole view and it therefore forms a significant component of the viewpoint. The lane itself forms a key link out to the popular walker's car park near Renscombe Farm.	H	M/H	M	Medium/High
477	On Weston Lane between Renscombe Farm & Weston Farm.	View looking north towards the Field Study Centre across the open limestone plateau landscape. The majority of this landscape lies within the draft SRA and therefore forms a significant component of the viewpoint. The lane itself forms a key link out to the popular walker's car park near Renscombe Farm.	H	M/H	M	Medium/High
478	View west towards Houns-tout and Chapmans Pool along line of footpath from walker's car park near Renscombe Farm. Similar issues as viewpoint 2168 albeit in opposite direction.					
479	View east towards Weston Farm and village edge from footpath out to St. Aldheims Head near walker car park. Similar views and issues as viewpoint 2170.					
480	Not used					
481	View east from Square & Compass pub across National Trust land (East Man). Similar issues as viewpoint 2228 with SRA on horizon.					
482	Not used					

483	On road entering Worth Matravers near drive to Seacombe House.	View southwest towards village edge with West Man hill on far skyline on main route in to village from the east. The SRA covers the fields in this view and it therefore forms a significant component of the viewpoint and setting of the village.	H	M/H	M/H	Medium/High
484	View east towards Eastington Farm on road entering Worth Matravers near drive to Seacombe House. Similar views and issues as viewpoint 2227					
485	On road entering Worth Matravers north of Abbots Way (in view).	View south across field towards Abbots Way and out to the strip lynchets seen on the eastern flanks of Seacombe Bottom. The whole of this view, from the foreground out to the skyline, lies within the SRA and it therefore forms a key component of the wider landscape. In this way it influences the setting of Seacombe Bottom, the wider valley landscape and forms part of the setting of the village.	H	M/H	M/H	Medium/High
486	View southwest along road entering Worth Matravers north of Abbots Way (to left of view). Same location as 485 and similar issues as this view in terms of setting of village. Also similar issues as viewpoint 2226.					
487	View southeast along line of bridleway from road entering Worth Matravers towards Eastington Farm on the left skyline. Similar issues as viewpoint 2226.					
488	Parish council walkers car park on edge of Worth Matravers	View looking southwest along northern edge of village in the car park extension towards Weston Farm. Views from this well used facility form an open vista over the settlement. The vast majority of the landscape both near and far in this view falls within the SRA. It therefore has a significant influence on the overall view composition from a popular viewpoint.	H	H	M/H	High/Medium
ACTON viewpoints						
489	On 'c' road between Worth Matravers and Acton, west of settlement.	View looking east towards Acton from this well used road used by cyclists and walkers as well as drivers. The limestone grassland foreground, which lies within the SRA, dominates the view and therefore contributes to the overall view composition and to the setting of the hamlet. The newly restored dry stone wall provides a locally distinctive boundary and frame for this view.	H/M	M	H/M	Medium/High
403	On 'c' road between Worth Matravers and Acton, near junction with B3069.	View looking southeast towards Acton from this well used road used by cyclists and walkers as well as drivers. The planted foreground, which lies within the SRA, dominates the view and therefore contributes to the overall view composition and to the setting of the hamlet.	H/M	M/H	H/M	High/Medium
404	On access road into Acton adjacent to National Trust car park.	View looking south towards Acton from the well used main access point into the hamlet from the adjacent National Trust car park. The whole of the limestone grassland foreground, which lies within the SRA, dominates the view and therefore contributes to the overall view composition and in particular to the setting of the hamlet and the Conservation Area.	H	H	H/M	High
405	From Priests Way south of Acton.	View looking north to Acton from Priests Way with the Purbeck Ridge on the right skyline. The whole of the limestone grass and scrub foreground, which lies within the SRA, dominates the view and therefore contributes to the overall view composition and in particular to the setting of the hamlet and the Conservation Area.	H	H	H/M	High
406	From Priests Way south of Acton. View northwest to existing quarry workings; for context					
407	From Priests Way south of Blacklands cottages.	View looking north to Acton from Priests Way across Blacklands with the Purbeck Ridge on the right skyline. The whole of the limestone grassland paddock in the foreground, which lies	H/M	H	H/M	High/Medium

		within the SRA, dominates the view and therefore contributes to the overall view composition and in particular to the setting of Blacklands as well as the Conservation Area. The dry stone wall provides a locally distinctive boundary and frame for this view.				
408	From Priests Way southeast of Blacklands cottages.	View looking northwest from Priests Way across to Blacklands cottages. The whole of the limestone grassland paddock in the foreground, which lies within the SRA, is a prominent feature in the view and therefore contributes to the overall view composition and in particular to the setting of Blacklands and the Conservation Area. The existing dry stone walls provide key features running across the view.	H/M	H	H/M	High/Medium
409	Not used					
410	From west-east public footpath north of Blacklands	View looking northwest towards Acton from a public right of way which runs west to east just north of Blacklands. The whole of the rough limestone grass/scrub land paddock in the foreground, which lies within the SRA, is a prominent feature in the view and therefore contributes to the overall view composition. Its contribution to the setting of Acton is limited due to its elevation in relation to the settlement.	M/H	M/H	M	Medium/High
411	From north-south public footpath which links Priests Way with B3069, east of Acton	View looking west towards Acton on the horizon, from a public right of way which runs north to south linking Langton Matravers to Priests Way. The whole of the rough limestone grass/scrub land paddock in the foreground, which lies within the SRA, is a prominent feature in the view up to the skyline and therefore contributes to the overall view composition. Its contribution to the setting of Acton is limited due to its elevation in relation to the settlement. The dry stone wall provides a locally distinctive boundary and frame for this view.	M/H	M/H	M	Medium/High
412	From public footpath which runs west-east linking B3069 and Acton.	View looking east towards Langton Matravers (just visible on the horizon), from a public right of way which runs west to east linking Langton Matravers to Acton. The whole of the rough limestone grass/scrub land paddock in the foreground, which lies within the SRA, is a prominent feature in the view and therefore contributes to the overall view composition.	M	M/H	M/H	Medium/High
413	From public footpath which runs west-east linking B3069 and Acton.	View looking southwest towards Acton, from a public right of way which runs west to east linking Langton Matravers to Acton. The whole of the rough limestone grass/scrub land paddock in the foreground, which lies within the SRA, is a prominent feature in the view up to the settlement edge and therefore contributes significantly to the overall view composition. Its contribution to the setting of Acton and the Conservation Area is also important.	H/M	M/H	H	High/Medium
414	From north end of public footpath which links Priests Way with B3069, northeast of Acton	View looking southwest towards Acton, from a public right of way which runs north to south linking Langton Matravers to Priests Way and the camping ground. The whole of the grazed limestone grassland paddock in the foreground, which lies within the SRA, is a prominent feature in the view up to the settlement edge and therefore contributes significantly to the overall view composition, despite the tin sheep fencing. Its contribution to the setting of Acton and the Conservation Area is	H	M/H	H	High

		also important.				
--	--	-----------------	--	--	--	--

Visual resource sensitivity summary

The results of this analysis show a range of sensitivities but with the majority being high. Of the 60 viewpoints assessed 21 (35%) where HIGH; 18 (30%) HIGH/MEDIUM; 15 (25%) MEDIUM/HIGH and 6 (10%) MEDIUM.

The overall picture this presents is of a highly visible landscape (65% of viewpoints being in the High- High/Medium category), seen by many people over long periods of time who are mainly recreational users of the landscape with high expectations of its quality, condition and tranquillity. The conclusion is that the landscape has a high level of visual sensitivity and that high quality site planning and design is justified and that the rate of landscape change needs to be managed to keep impacts to a minimum.

5. Significance of Impacts

The impacts on each of the visual resources are assessed using a set of criteria based on the scale and nature of the impact on each resource balanced by the level of sensitivity calculated at the baseline stage (Table 1).

♦ Significance criteria

The potential significance of landscape and visual impacts is determined by a combination of the magnitude of the potential impact and the sensitivity of the receptor to change. These two variables can be combined as illustrated in table 2 below.

Table 2. Matrix to determine significance of effects

Sensitivity of receptor to change	Magnitude of change				Significance of effect
	Negligible	Moderate	Moderate/major	Major	
Very high	Negligible	Moderate	Moderate/major	Major	
High	Negligible	Minor/moderate	Moderate	Moderate/major	
Medium	Negligible	Minor	Minor/Moderate	Moderate	
Low	Negligible	Negligible	Minor	Minor/Moderate	

Impact on visual resources

Table 3. Presents the assessment of visual impacts of open quarrying within the SRA on each viewpoint identified in the baseline study. In order to assess the potential impacts at this stage it is assumed and visualised that in each 'view shed' a small-scale open quarry (approximately 2 hectares) is present along with the associated plant, stockpiles and overburden mounds currently associated with such a quarry in Purbeck. Often these have traditional forms of remediation mitigation such as bunds but these can create their own set of negative impacts, as they are not characteristic features of the receiving landscape. Mitigation involves ideally the avoidance of identified negative effects at the earliest stages rather than just trying to reduce them. This can be achieved by careful siting of development which creates the least negative impacts to landscape character.⁸

Table 3 Assessment of visual impact & significance

* **Nature of visual impact** will be given which will depend on how much of the view is affected and what happens to the view as a result of the proposals.

** **Magnitude of change** criteria defined as:

High/Major

- Total loss of or major alteration to key elements/ features/characteristics of the baseline, i.e. pre-proposal landscape or view and/ or introduction of elements considered to be totally uncharacteristic when set within the attributes of the receiving landscape

Medium/Moderate

- Partial loss of or alteration to key elements/ features/characteristics of the baseline, i.e. pre-proposal landscape or view and/ or introduction of elements that may be prominent but may not necessarily be considered to be substantially uncharacteristic when set within the attributes of the receiving landscape

Low/Minor

- Minor loss of or alteration to key elements/ features/characteristics of the baseline, i.e. pre-proposal landscape or view and/ or introduction of elements that may not necessarily be considered to be uncharacteristic when set within the attributes of the receiving landscape

⁸ This is the 'best practice' approach to mitigation as indicated in the 'Guidelines for Landscape and Visual Assessment' (2nd Edition, 2003)

Negligible

- Very minor loss of or alteration to key elements/ features/characteristics of the baseline, i.e. pre- proposal landscape or view and/ or introduction of elements that are not uncharacteristic with the surrounding landscape- approximating the 'no change' situation

*** Significance criteria defined as:

Imperceptible

- The degree of change is so small as to have little or no effect

Slight

- The proposals have some, but only a limited effect within the mainly local context

Moderate

- The proposals have a noticeable effect within the context of the wider area

Substantial

- The proposals have a large effect within the context of the wider area

Severe

- The proposals are wholly out of character with the existing situation, both locally and on the wider scale

No of photo viewpoint	Overall viewpoint sensitivity (from table 1)	Nature of visual impact*	Magnitude of change**	Significance***
2157-2159	High/Medium	If one or more open quarries were to appear along the exposed and open north facing slopes of this area it would have a major adverse impact on these views. The cumulative impact would create significant negative affects on the overall view composition. This would impact negatively on the amenity of users of the Purbeck Way and other rights of way, on areas of open access land and on the generally undeveloped and intimate patchwork landscape of the Corfe Valley Landscape Character Area. This would all contribute to an incremental erosion of character within the Dorset AONB. These north facing areas are more open to direct inward views as they are angled towards the viewer. See Diagram 1 below. To the south of the valley sides the impacts of small scale quarrying could be reduced due to the breaking up of the views caused by the slacker slope. The value of characteristic landscape features such as hedgerows, copses and dry walls also help in this regard as they visually break up the impact of development by creating a series of horizontal features within which the small quarries could be positioned. This assumes that any future development would be based on the recommended 'scattered' approach as advocated and explained in the 'Purbeck Stone Extraction in the Dorset AONB' report.	High/Moderate	Substantial/ Severe
2160-2161	High/Medium	As above	High/Moderate	Substantial/ Severe
2162-2164	High/Medium	As above	High/Moderate	Substantial/ Severe
2165-2167	Medium	Development in this small paddock would have a moderate adverse impact on residential amenity particularly related in visual and noise impacts. The impacts on public viewpoints are limited to more distant views, as it is not public space or on a right of way. The impacts from the Purbeck ridge and on the setting of the Conservation Area would be moderate to low depending on the precise location, scale and duration of any development in relation to the property boundaries. Other issues would be the potential impact on the intimate character of Crack Lane and the Cemetery.	Medium/Moderate	Slight/Moderate
2168	Medium/High	Development would have a moderate to low adverse impact on this view due to the flat and open plateau topography which reduces views into any development and the viewing position is at the same level as the receiving landscape. The dry stonewalls break up the line of sight and limit wider views across the landscape. They also provide a framework and historic pattern within which development can be located. The view is seen sequentially as viewers pass through the landscape to more sensitive destinations rather than form a focal point or more sensitive viewpoint such as found along the coast.	Moderate/Low	Moderate
2169	Medium	Development would have a low adverse impact on this view due to the fact that the main focus of	Low/Minor	Slight

		attention is seaward and not part of a wider view 'in the round', the visual barrier and viewpoint foreshortening effect of the adjacent stonewall and the level of the path is lower than the adjacent fields. There are therefore limited glimpses into the SRA from this location.		
2170	High	Development in this view would have a major adverse impact on the amenity of this well used and popular national route, on the overall view composition which widens out, as more of the view 'in the round' is available and would contribute to an incremental erosion of character within the Dorset AONB. This wider view not only includes the coast and sea but also the open plateau landscape due to the lack of wall and the level of the path in relation to the adjacent fields.	Medium/High	Substantial/Severe
2171	High	Development in this view would have a major adverse impact on the amenity of this well used and popular national route, on the overall view composition which widens out as more of the view 'in the round' is available and would all contribute to an incremental erosion of character within the Dorset AONB. This wider view not only includes the coast and more of the sea on the horizon but also the open plateau landscape due to the lack of wall and the level of the path in relation to the adjacent fields.	Medium/High	Substantial/Severe
2172	Medium/High	Development in this view would have a major adverse impact on the amenity of this well used and popular national route, on the overall view composition as any development would be seen right ahead on the skyline and therefore adversely impacting on the dramatic views. This would all contribute to an incremental erosion of character within the Dorset AONB. The main focus of this view now combines the dramatic incised valley and the coastal/seascape views with the plateau landscape to create an 'all round' viewing experience as the viewer passes along this landscape corridor.	High/Major	Substantial/Severe
2173	High	Development in this view would have a major adverse impact on the amenity of this well used and popular national route and on the overall view composition as any development would be seen right ahead on the skyline and therefore adversely impacting on the dramatic views. This would all contribute to an incremental erosion of character within the Dorset AONB. The main focus of this view now combines the dramatic incised valley, the coastal cliffs and seascape views with the plateau landscape to create an 'all round' viewing experience as the viewer passes along this landscape corridor.	High/Major	Substantial/Severe
2174	High	Development in this view would have a major adverse impact on the amenity of this well used and popular national route and on the overall view composition as any development would be seen right ahead and dominant on the skyline therefore adversely impacting on the dramatic views. This would all contribute to an incremental erosion of character within the Dorset AONB. The main focus of this view combines the dramatic coastal and seascape views with those out over the plateau landscape to the far inland horizon, to create an 'all round' viewing experience as the viewer passes along this landscape corridor.	High/Moderate	Substantial
2175	High	Development in this view would have a major adverse impact on the amenity of this well used and popular national route and on the overall view composition particularly at this key focal point and destination on the Coast path. This would all contribute to an incremental erosion of character within the Dorset AONB. The overall scenic view 'in the round' is important in this unique location and the draft SRA occupies a significant proportion of the foreground and much of the middle ground at this sensitive viewpoint.	High/Major	Severe
2176	Medium/High	Development in this view would have a moderate adverse impact on the amenity of this well used and popular national route and on the overall view composition. A relatively small proportion of the SRA is seen but it is in a prominent position on the	Major/Moderate	Moderate

		skyline. Despite being viewed sequentially and the main focus of attention being seaward, it forms a significant component in an overall important viewshed, contributing to the overall scenic view 'in the round'.		
2178	High	Development in this view would have a major adverse impact on the amenity of this well used and popular national route and on the overall view composition. It would impact negatively on the historic strip lynchet filed pattern which is designated as SAM. This would all contribute to an incremental erosion of character within the Dorset AONB. A significant part of the draft SRA is visible and dominates the northern skyline adding to its significance. Despite most people viewing this scene sequentially as they pass through the landscape, it still contributes significantly to the overall view 'in the round', which includes Winspit, a very popular focal point and destination.	High/Major	Substantial
2179	High	Development in this view would have a major adverse impact on the amenity of this well used and popular national route and on the overall view composition. It would impact negatively on the historic strip lynchet filed pattern which is designated as SAM. This would all contribute to an incremental erosion of character within the Dorset AONB. A significant part of the draft SRA is visible not only on the skyline but covering a large area of a distinctive landscape feature; East Man. This is an important view and the SRA forms a key component of this location, contributing significantly to the overall view 'in the round', which includes Winspit, a very popular focal point and destination valued for its wild/remote perception.	High/Major	Substantial/Severe
2180	High/Medium	Development in this view would have a major adverse impact on the amenity of this well used and popular national route and on the overall view composition. It would impact negatively on the historic strip lynchet filed pattern which is designated as SAM. This would all contribute to an incremental erosion of character within the Dorset AONB. A significant part of the SRA is visible and the fact it lies across the skyline increases its significance, despite it being seen sequentially as people pass along the Coast path. It forms a key part of the overall viewing experience.	High/Moderate	Substantial/ Moderate
2182/83	High	Development in this view would have a major adverse impact on the amenity of this well used and popular route and on the overall view composition. It would impact negatively on the historic strip lynchet filed pattern which is designated as SAM. This would all contribute to an incremental erosion of character within the Dorset AONB. A large part of the distinctive and prominent skyline is visible and despite most people viewing this scene sequentially as they head south to Winspit and the coast, the landscape importance of West Man, means it still contributes significantly to the overall quality of the viewing experience.	High/Major	Substantial
2185	High/Medium	Development in this view would have a major adverse impact on the amenity of this well used and popular route and on the overall view composition. It would impact negatively on residential amenity and in particular relating to visual and noise impacts. This would all contribute to an incremental erosion of character within the Dorset AONB. The entire foreground is in the SRA and despite most people viewing this scene sequentially; it still forms a significant part of the overall view and scenic composition on the edge of the village.	High/Major	Substantial/ Severe
2186	High	Development in this view would have a major adverse impact on the amenity of this well used and popular route and on the overall view composition. It would impact negatively on the historic strip lynchet filed pattern which is designated as SAM. This would contribute to an incremental erosion of character within the Dorset AONB. The entire view is in the draft SRA including the prominent skyline. Despite most people viewing this scene sequentially; it still forms a significant part of the overall view and scenic	High/Major	Substantial

		composition on the southern edge of the village.		
2187	High/Medium	Development in this view would have a moderate to major adverse impact on the amenity of this route, on the overall view composition and on the setting of this side of the village. This would contribute to an incremental erosion of character within the Dorset AONB. A large proportion of the view is in the SRA which runs up to the village edge and links the two distinct parts of the settlement. Despite most people viewing this scene sequentially; it still forms a significant part of the overall view and contextual setting of the western edge of the village.	Moderate/Major	Moderate/ Substantial
2188	High	Development in this view would have a major adverse impact on the amenity of this route, on the overall view composition and on the setting of this side of the village. This would contribute to an incremental erosion of character within the Dorset AONB. The whole of the grassland in this view is in the SRA which wraps around the settlement edge. Despite most people viewing this scene sequentially; it still forms a dominant part of the overall view and contextual setting of the whole of the southern edge of the village.	High/Major	Substantial
2190-2192	Medium/High	Development in this viewshed would have a major adverse impact on the amenity of passers by using the lane to and from Worth Matravers and on the overall viewpoint composition. It would create an additional cumulative impact if seen with the existing Swanworth quarry. A significant amount of the SRA is seen from this location which although mainly seen sequentially, does contribute to the overall scenic composition. There would be a negative impact on the characteristic field pattern on the slopes facing the viewer and out to the horizon. This would all contribute to an incremental erosion of character within the Dorset AONB.	Major/Moderate	Moderate/ Substantial
2193-2196	High/Medium	Development in this viewshed would have a major to moderate adverse impact on the amenity of those using this popular car park and on the overall viewpoint composition. It would create an additional cumulative impact if seen with the existing Swanworth quarry. This would all contribute to an incremental erosion of character within the Dorset AONB and on the setting of the village edge. A significant amount of the SRA is seen from this location, particularly in the foreground, which for some it is seen whilst 'passing through' and sequentially, on the way to more significant destinations. However its contribution to the overall scenic composition when visiting this part of the Purbecks at a key entry/exit point is significant.	Major/Moderate	Moderate/ Substantial
2197	High	Development in this view would have a major adverse impact on the residential amenity for those properties overlooking the valley and for those using the lane for recreational access to the popular network of rights of way in the area. It would impact negatively on the historic strip lynchet field pattern which is designated as SAM, on the setting of the village and its Conservation Area, and therefore on the overall viewpoint composition. This would all contribute to an incremental erosion of character within the Dorset AONB. The entire view is in the SRA, including the prominent skyline and therefore forms a significant part of the overall view and scenic composition.	High/Major	Severe
2199	High	Development in this view would have a major adverse impact on the residential amenity for those properties overlooking the valley and for those using the lane for recreational access to the popular network of rights of way in the area. It would impact negatively on the setting of the village, its Conservation Area and therefore on the overall viewpoint composition. This would all contribute to an incremental erosion of character within the Dorset AONB. The entire view is in the SRA which runs right up to the village edge and therefore forms a significant part of the overall view and scenic composition up to the head of this valley.	High/Major	Severe
2200	Medium/High	Development in this view would have a moderate adverse impact on the amenity of this well used and	Moderate	Moderate/ Substantial

		popular path route and on the overall view composition. A large proportion of the draft SRA is seen in a prominent position right across to the skyline. It is being viewed sequentially and the main focus of attention is seaward away from the SRA. However it still does form a significant component in an overall important viewshed, contributing to the scenic view 'in the round'.		
2201-2204	High	Development in this view would have a major adverse impact on the amenity of this well used and popular route and on the overall elevated view composition. This would contribute to an incremental erosion of character within the Dorset AONB. The SRA dominates the view which unfolds as the viewer moves along this route. As well as this sequential view, the elevated location also affords an opportunity to stop and admire the panoramic scene before dropping down into Seacombe Bottom.	High/Major	Substantial/ Severe
2205	High/Medium	Development in this view would have a major to moderate adverse impact on the amenity of this well used and popular route and on the overall view composition of the valley head. This would contribute to an incremental erosion of character within the Dorset AONB. A significant part of the SRA dominates the skyline view which unfolds as the viewer moves down into the valley along this route. Despite most people viewing this scene sequentially; it still forms a significant part of the overall view and scenic composition and appreciation of this popular valley.	Major/Moderate	Substantial/ Moderate
2206	High	Development in this view would have a major adverse impact on the amenity of this well used and popular national route and on the overall view composition. It would impact negatively on the historic strip lynchet filed pattern which is designated as SAM. This would all contribute to an incremental erosion of character within the Dorset AONB. A significant part of the SRA is visible and dominates the skyline on the slopes of two key landscape features, adding to its significance. This view changes and unfolds as the viewer moves along the coast but it is also a 'one off' destination and obvious focus of attention for viewers who just visit this one location.	High/Major	Severe
2207	Medium	Development in this view would have a minor adverse impact on the amenity of this well used and popular national route and on the overall view composition. None of the SRA is apparent in this view, as it is located beyond the skyline which combines with the rest of the overall scenic view 'in the round' to form a key panorama.	Low/Minor	Imperceptible/ Slight
2209	Medium	Development in this view would have a minor adverse impact on the amenity of this well used and popular national route and on the overall view composition. None of the SRA is apparent in this view, as it is located beyond the skyline which combines with the rest of the overall scenic view 'in the round' to form a key panorama.	Low/Minor	Imperceptible/ Slight
2210	Medium	Development in this view would have a moderate to low adverse impact on the amenity of this well used route and on the overall view composition. A small proportion of the SRA is visible in this view along the skyline in the middle distance and therefore only makes up a limited element of the view 'in the round'. The view is also only available on a relatively short length of path which runs north into the plateau landscape.	Moderate/Low	Slight/Moderate
2211	Medium	Development in this view would have a moderate to low adverse impact on the amenity of this well used route and on the overall view composition. A small proportion of the SRA is visible in this view as it lies just beyond the immediate skyline and therefore only makes up a limited element of the view 'in the round' despite its close proximity to the viewer as they pass along this popular route.	Moderate/Low	Slight/Moderate
2213	High/Medium	Development in this view would have a major adverse impact on the amenity and tranquillity of this well used and popular national route and on the overall view composition. This would all contribute to an incremental erosion of character within the Dorset	High/Major	Substantial/ Severe

		AONB. A significant part of the SRA is visible right on the skyline close to the viewer. Being on the junction of paths increases the significance of this important view 'in the round' as it is experienced by people in all directions of the compass.		
2216	High	Development in this view would have a major adverse impact on the amenity and tranquillity of this well used and popular national route and on the overall view composition. This would contribute to an incremental erosion of character within the Dorset AONB. A very significant part of the SRA is visible close to the viewer which therefore increases its contextual value and contribution to the overall scenic view 'in the round'. It is an important sequential view and one which is experienced and unfolds as the viewer moves through this open access corridor as well as enjoyed whilst stopping to take in the whole panoramic scenic composition; the view 'in the round'. The focus of attention can be said to be seaward but the open, expansive and undeveloped horizon on all sides is a key component.	High/Major	Severe
2217	High	Development in this view would have a major adverse impact on the amenity and tranquillity of this well used and popular national route and on the overall view composition. This would contribute to an incremental erosion of character within the Dorset AONB. A significant part of the SRA is visible close to the viewer in the right-hand (north) foreground and on the horizon. This increases its contextual value and contribution to the overall scenic view 'in the round'. It is an important sequential view and one which is experienced and unfolds as the viewer moves through this open access corridor as well as enjoyed whilst stopping to take in the whole panoramic scenic composition; the view 'in the round'. The focus of attention can be said to be seaward but the open and expansive horizon on all sides is a key component.	High/Major	Severe
2220	High	Development in this view would have a major adverse impact on the amenity and tranquillity of this well used and popular national route and on the overall view composition. This would contribute to an incremental erosion of character within the Dorset AONB. A significant part of the SRA is visible close to the viewer in the foreground as well as on the skyline. This increases its contextual value and contribution to the overall scenic view 'in the round'. It is an important sequential view and one which is experienced and unfolds as the viewer moves through this open access corridor as well as enjoyed whilst stopping to take in the whole panoramic scenic composition; the view 'in the round'. The focus of attention can be said to be seaward but the open and expansive horizon on all sides is a key component.	High/Major	Severe
2221	High	Development in this view would have a major adverse impact on the amenity and tranquillity of this well used and popular national route and on the overall view composition. This would contribute to an incremental erosion of character within the Dorset AONB. A significant part of the SRA is visible very close to the viewer in the foreground as well as running out north to the skyline. This increases its contextual value and contribution to the overall scenic view 'in the round'. It is an important sequential view and one which is experienced and unfolds as the viewer moves through this open access corridor to take in the whole panoramic scenic composition; the view 'in the round'. The focus of attention can be said to be seaward but the open and expansive horizon of the limestone plateau with its characteristic walls and field patterns to the north all contribute to this panoramic vista.	High/Major	Severe
2222	High/Medium	Development in this view would have a major to moderate adverse impact on the amenity and tranquillity of this well used and popular national route and on the overall view composition. This would contribute to an incremental erosion of character within the Dorset AONB. Although only a	Major/Moderate	Substantial/ Severe

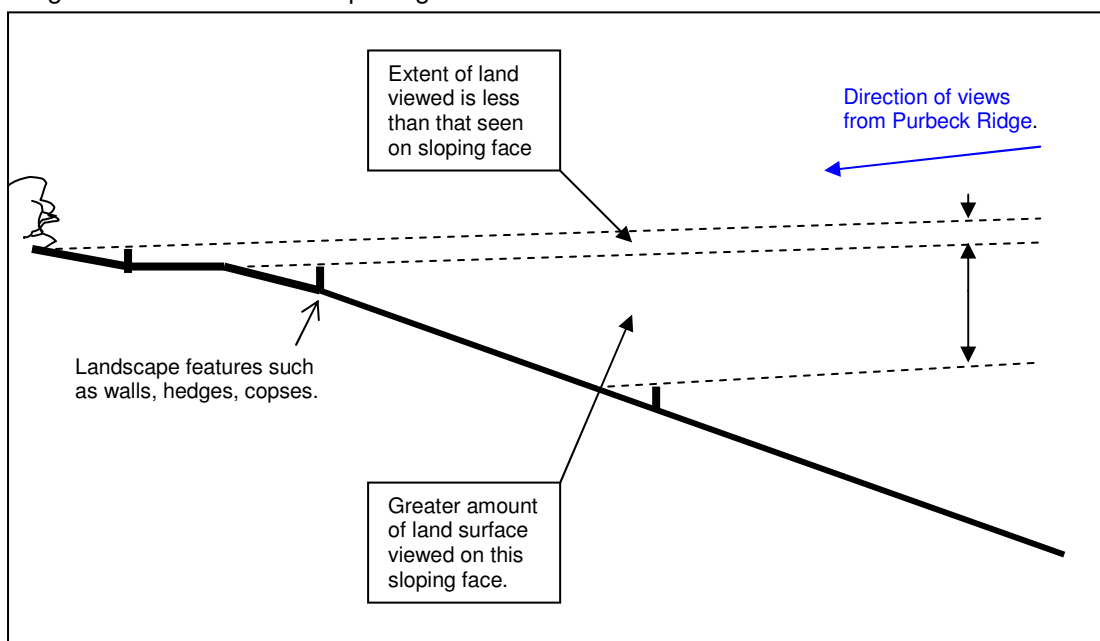
		relatively narrow strip of the SRA is seen, it is in a dominant position on the skyline. This increases its contextual value and contribution to the overall scenic view 'in the round'. It is an important sequential view and one which is experienced and unfolds as the viewer moves through this open access corridor as well as enjoyed whilst stopping to take in the whole panoramic scenic composition of the incised valley and views to the coast; the view 'in the round'. The focus of attention can be said to be seaward but the open and expansive horizon on all sides is a key component.		
2225	High/Medium	Development in this view would have a moderate to major adverse impact on the amenity and tranquillity of this popular route, which links Priests Way and the Coast paths, and on the overall view composition. This would contribute to an incremental erosion of character within the Dorset AONB. The vast majority of the view comprises the SRA from the foreground out to the prominent skyline. This increases its contextual value and contribution to the overall scenic view 'in the round'. It is a sequential view and one which is experienced and unfolds as the viewer moves through landscape to take in the whole panoramic scenic composition of the incised valley and views to the coast. The focus of attention can be said to be seaward but the open and expansive horizon on all sides is a key component.	Moderate/Major	Moderate/ Substantial
2226	High/Medium	Development in this view would have a major adverse impact on the amenity and tranquillity of this popular route, which links Priests Way and the village and on the overall view composition. This would contribute to an incremental erosion of character within the Dorset AONB. The foreground of the view comprises the SRA which increases its contextual/setting value and contribution to the overall scenic view out towards the coast. It is a sequential view and one in which the foreground dominates as the viewer moves along this route. It therefore forms the main focus of attention as most people's attention is drawn over this landscape to views out to sea.	High/Major	Substantial/ Severe
2227	Medium/High	Development in this view would have a moderate to low adverse impact on the amenity and tranquillity of this popular route, which links Priests Way and the village, on residential amenity and on the overall view composition. This would contribute to an incremental erosion of character within the Dorset AONB. The foreground and middle ground of the view comprises the draft SRA which increases its contextual/setting value and contribution to the overall view. It is a sequential view and one in which the foreground dominates as the viewer moves along this route. However unlike the coastal routes the view does not unfold in the same dramatic way.	Moderate/Low	Moderate
2228	High/Medium	Development in this view would have a major adverse impact on the amenity and tranquillity of this popular route, which links Priests Way and the village, on the setting of the village and on the overall view composition. This would contribute to an incremental erosion of character within the Dorset AONB. The whole of the landscape in this view comprises the SRA which increases its contextual/setting value and contribution to the overall view. It is a sequential view and one in which the foreground dominates as the viewer moves along this route. It therefore forms the main focus of attention as most people's attention is drawn over this landscape to the expansive views out to sea.	High/Major	Substantial/ Severe
474	Medium/High	Development in this view would have a major adverse impact on the amenity and tranquillity of this well used lane, on the setting of the village and the Worth Matravers Conservation Area, on residential amenity and on the overall view composition. This would contribute to an incremental erosion of character within the Dorset AONB. A large proportion of the view is in the draft SRA which runs up to the village edge and links the two distinct parts of the settlement. Despite most people viewing this scene sequentially; it still forms a significant part of	High/Major	Substantial/ Severe

		the overall view and contextual setting of the western edge of the village.		
476	Medium/High	Development in this view, particularly on the skyline, would have a moderate to major adverse impact on the amenity and tranquillity of this well used lane and on the overall view composition. This would contribute to an incremental erosion of character within the Dorset AONB. Elsewhere in the view development would have less of an impact due to the open plateau topography which reduces views into any development and the dry stonewalls break up the line of sight and limit wider views across the landscape. They also provide a framework and historic pattern within which development can be located. The view is seen sequentially as viewers pass through the landscape to more sensitive destinations rather than from a focal point or more sensitive viewpoint.	Moderate	Moderate/ Substantial
477	Medium/High	Development would have a moderate to low adverse impact on this view due to the flat and open plateau topography which reduces views into any development and the viewing position is at the same level as the receiving landscape. The dry stonewalls break up the line of sight and limit wider views across the landscape. They also provide a framework and historic pattern within which development can be located. The view is seen sequentially as viewers pass through the landscape to more sensitive destinations rather than form a focal point or more sensitive viewpoint.	Moderate/Low	Moderate
483	Medium/High	Development in this view would have a major to moderate adverse impact on the amenity of this well used lane, (used by walkers and cyclists as well as drivers), on the setting of the village, on residential amenity and on the overall view composition. This would contribute to an incremental erosion of character within the Dorset AONB. The fields are in the SRA which runs up to the village edge and therefore form a key element of the setting and entrance of the settlement. Despite most people viewing this scene sequentially; it still forms a significant part of the overall view and contextual setting of the eastern edge of the village.	Moderate/Major	Substantial/ Moderate
485	Medium/High	Development in this view would have a major to moderate adverse impact on the amenity of this well used lane (used by walkers and cyclists as well as drivers), on the setting of the village, on residential amenity and on the overall view composition. This would contribute to an incremental erosion of character within the Dorset AONB. The whole of the landscape in this view comprises the SRA which increases its contextual/setting value and contribution to the overall view. It is a sequential view and one in which the foreground dominates as the viewer moves along this route. It therefore forms the main focus of attention as most people's attention is drawn over this landscape to the expansive views out to Seacombe Bottom valley and the sea on the horizon.	Moderate/Major	Substantial
488	High/Medium	Development in this view would have a major to moderate adverse impact on the amenity of those using this popular car park, on the overall viewpoint composition and in particular on the setting of the village and its Conservation Area. This would all contribute to an incremental erosion of character within the Dorset AONB and on the setting of the village edge. A significant amount of the SRA is seen from this location, particularly in the foreground, which for some it is seen whilst 'passing through' and sequentially, on the way to more significant destinations. However its contribution to the overall scenic composition when visiting this part of the Purbecks at a key entry/exit point is significant.	Major/Moderate	Moderate/ Substantial
ACTON viewpoints				
489	Medium/High	Development in this view would have a major to moderate adverse impact on the amenity of this well used lane, on the setting of the village and its Conservation Area and therefore on the overall view composition. The whole of the landscape in this view	Moderate/Major	Moderate/ Substantial

		comprises the SRA but the main focus of attention in this view is drawn towards the coast and sea, especially on clear days. This and the fact it is a sequential sideways view as people move along the lane, reduces the potential significance of impacts.		
403	High/Medium	Development in this view would have a major to moderate adverse impact on the amenity of this well used lane, on the setting of the village and its Conservation Area and therefore on the overall view composition. The SRA does lie within the foreground and Acton sits right on the horizon drawing the viewer's attention south. The lack of stone wall also means there is a less of a foreshortening effect and the eye is drawn out across the landscape towards Acton.	Major/Moderate	Substantial
404	High	Development in this view would have a major adverse impact on the amenity of those using this popular route into Acton, on the overall viewpoint composition and in particular on the setting of the village and its Conservation Area. This would all contribute to an incremental erosion of character within the Dorset AONB and on the setting of the village edge. The SRA covers the entire foreground and middle ground in the view running up to the settlement edge, which sits right on the skyline, adding to the its contextual/setting value.	Major	Severe
405	High	Development in this view would have a major adverse impact on the amenity of this well used path, on the setting of the village, its Conservation Area and on the overall view composition. This would contribute to an incremental erosion of character within the Dorset AONB. The whole of the landscape in this view comprises the SRA which increases its contextual/setting value and contribution to the overall view. It is a sequential view and one in which the foreground dominates as the viewer moves along this route. It therefore forms a focus of attention as most people's attention is drawn over this landscape to the skyline towards Acton and the Purbeck Ridge.	Major	Substantial
407	High/Medium	Development in this view would have a major adverse impact on the amenity of this well used path, on the setting of Blacklands, its Conservation Area and on the overall view composition. This would contribute to an incremental erosion of character within the Dorset AONB. The whole of the landscape in this view comprises the SRA which increases its contextual/setting value and contribution to the overall view. It is a sequential view and one seen over the stone wall which provides a foreshortening effect helping to deflect some focus back along the route corridor. However in this location there is a strong draw north over this landscape to the skyline towards Acton and the Purbeck Ridge.	Major	Severe
408	High/Medium	Development in this view would have a major adverse impact on the amenity of this well used path, on the setting of Blacklands, its Conservation Area and on the overall view composition. This would contribute to an incremental erosion of character within the Dorset AONB. The whole of the landscape in this view comprises the SRA which increases its contextual/setting value and contribution to the overall view. It is a sequential view and one seen over the stone wall and through gates, which provides a foreshortening effect helping to deflect some focus back along the route corridor. However in this location there is a strong draw north over this landscape to the skyline towards Acton and the Purbeck Ridge.	Major	Severe
410	Medium/High	Development in this view would have a moderate to major adverse impact on the amenity of this path, on the setting of Acton, its Conservation Area and on the overall view composition. The whole of the landscape in this view comprises the SRA which increases its contextual/setting value. However due to the existing scrubby vegetation, the fact that Acton lies partially below the horizon and the rising ground running up to the settlement edge, the significance of impacts would be reduced if	Moderate/Major	Moderate/ Substantial

		development was located at lower levels. It is also a sequential view from a less important path than for example Priests Way, and not from a fixed location or point of interest.		
411	Medium/High	Development in this view would have a moderate to major adverse impact on the amenity of this path, on the setting of Acton, its Conservation Area and on the overall view composition. The whole of the landscape in this view comprises the SRA which increases its contextual/setting value. However due to the existing scrubby vegetation, the fact that Acton lies partially below the horizon and the rising ground running up to the settlement edge, the significance of impacts would be reduced if development was located at lower levels. It is also a sequential view from a less important path than for example Priests Way, and not from a fixed location or point of interest. The view is also one seen over the stone wall which provides a foreshortening effect helping to deflect some focus back along the north-south route corridor.	Moderate/Major	Moderate/Substantial
412	Medium/High	Development in this view would have a moderate to major adverse impact on the amenity of this path and on the overall view composition. The whole of the landscape in this view comprises the SRA which increases its contextual/setting value. However due to the existing scrubby vegetation and rough ground the significance of impacts would be reduced if development was located at lower levels in the south east of the field. It is also a sequential view from a less important path than for example Priests Way, and not from a fixed location or point of interest.	Moderate/Major	Moderate/Substantial
413	High/Medium	Development in this view would have a major adverse impact on the amenity of this path, on the setting of Acton, its Conservation Area and on the overall view composition. This would contribute to an incremental erosion of character within the Dorset AONB. The whole of the landscape in this view running up to the settlement edge, which sits right on the skyline, comprises the SRA which increases its contextual/setting value. It is a sequential view and one which unfolds as the viewer approaches Acton; the main visual draw along this route.	Major	Severe
414	High	Development in this view would have a major adverse impact on the amenity of this well used path (which links to Priests Way), on the setting of Acton, its Conservation Area and on the overall view composition. This would contribute to an incremental erosion of character within the Dorset AONB. The whole of the landscape in this view comprises the SRA which increases its contextual/setting value and contribution to the overall view. The settlement sits right on the horizon dominating the view and draws the viewer's attention southwest as the viewer passes along the path. It is also a view seen from passing drivers albeit glimpsed.	Major	Severe

Diagram 1 illustrates how slope angle can affect views



Summary of the significance of visual impacts

The overall picture of the significance of the visual impacts is that of the 60 viewpoints assessed; 2 were Imperceptible/Slight change; 1 Slight; 3 Slight/Moderate; 4 Moderate; 11 Moderate/Substantial; 3 Substantial/Moderate; 7 Substantial; 16 Substantial/Severe and 13 Severe change.

The conclusion is that the visual impacts of the proposals on the viewpoints are mainly Substantial, Substantial/Severe and Severe (60%). This is particularly due to the overall sensitivity of the receiving landscape in terms of its landscape and historic character, visual amenity and its recreational value.

6. Summary of the significance of Impacts

The conclusion is that the impacts of the draft SRA on landscape and visual resources are overwhelmingly major in significance and it would have an overall adverse impact on landscape and visual character and amenity.

7. Mitigation of negative landscape or visual effects

The impact assessment above concludes that the current SRA would have an overwhelming adverse impact on landscape and visual character and amenity. For this reason 'traditional' forms of mitigation which simply 'reduce' impacts is not considered sufficient in this sensitive landscape. It is therefore recommended that the SRA is redrawn so that the identified impacts can be 'avoided' at the earliest stage in the planning process⁹ to ensure that preferred sites are identified within the area assessed to be of least landscape and visual impact.

The recommended changes to the SRA; see Plan 2, provides a visual, amenity and tranquillity 'buffer' to the sensitive zones identified in this study. This pulls the edges of the area away from key locations, sensitive urban edges, viewpoints and ridgelines. For this reason it is suggested that the area is renamed as a 'zone of least landscape and visual sensitivity'.

It is also recommended that within this zone any future quarrying activity is small scale and follows the combination of measures outlined below¹⁰. It should also follow the 'scattered' approach advocated in the Dorset AONB 'Purbeck Stone Extraction in the Dorset AONB' report and therefore more likely to be in keeping with the traditional approach to Purbeck stone extraction.

Worth Matravers and Acton

Both of these settlements warrant specific attention in the assessment as the only two built up areas which are surrounding by the SRA. The landscape and visual assessment has therefore provided a sufficiently detailed analysis of the relationship between these two distinctive settlements and their landscape setting. This then provides a basis for mitigating identified negative impacts and in this case to make recommendations about boundary revisions to the original SRA based on landscape sensitivities. Worth Matravers has a unique setting in the limestone plateau landscape on the edge of the two incised valleys which sweep down to the coast, to Seacombe and Winspit. In this way it has a prominent location and strong relationship with a very popular, well used and therefore sensitive landscape. Its historic core, designated as Conservation Area, has an important link with its surrounding landscape which therefore contributes to its unique setting.

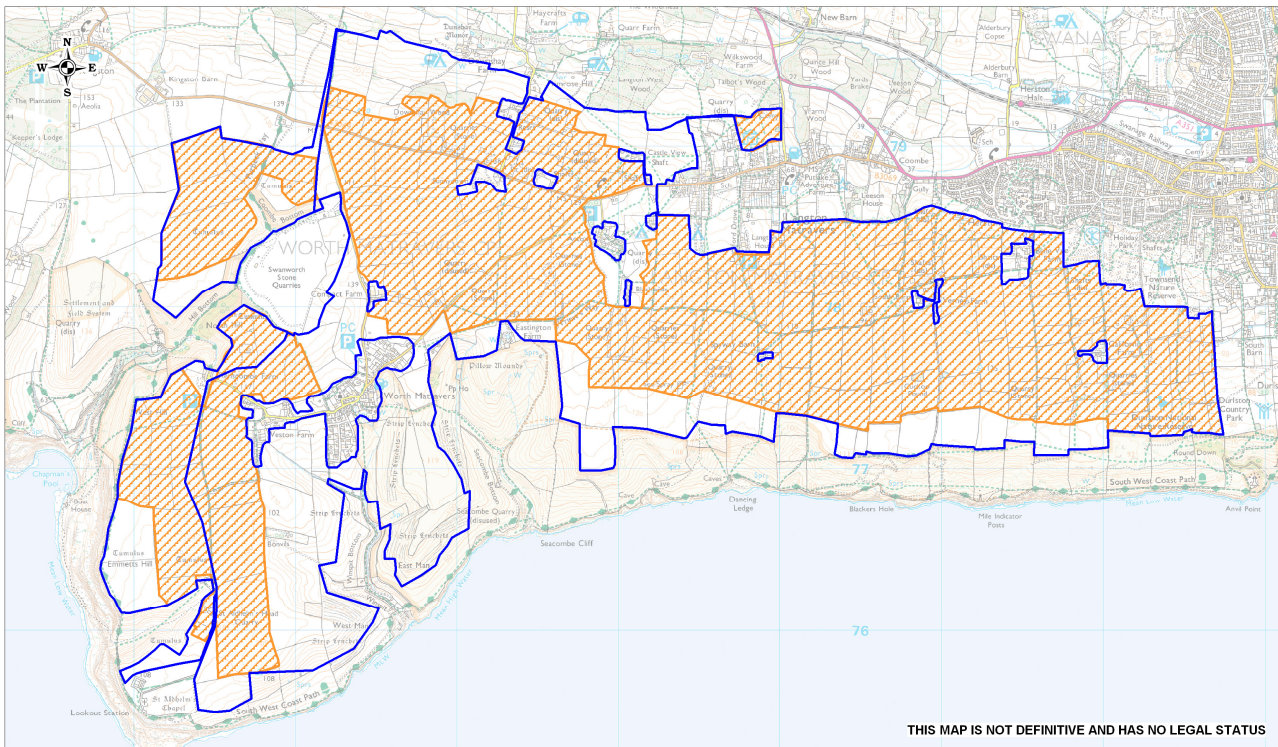
Acton similarly has an important, but slightly less dramatic, setting in a landscape which has evolved around stone quarrying. Like Worth Matravers it now has an environment which provides the setting for many outdoor recreational activities and one which provides an undeveloped rural setting for its historic core. The setting value of its surrounding landscape is recognised in its Conservation Area designation.

The recommended 'zone of least landscape and visual sensitivity' respects the integrity of the strong rural-urban relationship both settlements have when viewed from key locations and provides a reasonable visual and physical buffer between their settlement edges and historic cores. This also helps to conserve the amenity of users of the many rights of way in the area and conserves the setting of these settlements as a key component of the wider landscape character of the Purbeck plateau.

⁹ This is the 'best practice' approach to mitigation as indicated in the 'Guidelines for Landscape and Visual Assessment' (2nd Edition, 2003)

¹⁰ Small scale excavation over short operational campaigns; Ongoing and phased restoration to help reduce negative cumulative impacts based on the principles set out in the relevant 'Draft Mineral Restoration Strategies' DCC 2011 ; The retention, protection and enhancement of landscape/ecological features to screen/integrate development; Positive ongoing landscape and ecological enhancement measures; Positive ongoing restoration based on an understanding of landscape ecology; Minimising the bulk, scale and heights of storage/stockpile areas; Prompt seeding of exposed cut faces of excavations and minimising the bulk, scale and heights of any required bunds.


Plan 2 'Zone of least landscape and visual sensitivity'




THIS MAP IS NOT DEFINITIVE AND HAS NO LEGAL STATUS

Purbeck Stone Resource Area

Landscape & Visual Sensitivity Study

 Recommended 'Zone of Least Landscape & Visual Impact'

 Stone Resource Area (Study Area)

Ref: Plan 2

Date: 09/11/2011

Scale 1:28000

Drawn By: ANH

Cent X: 399152

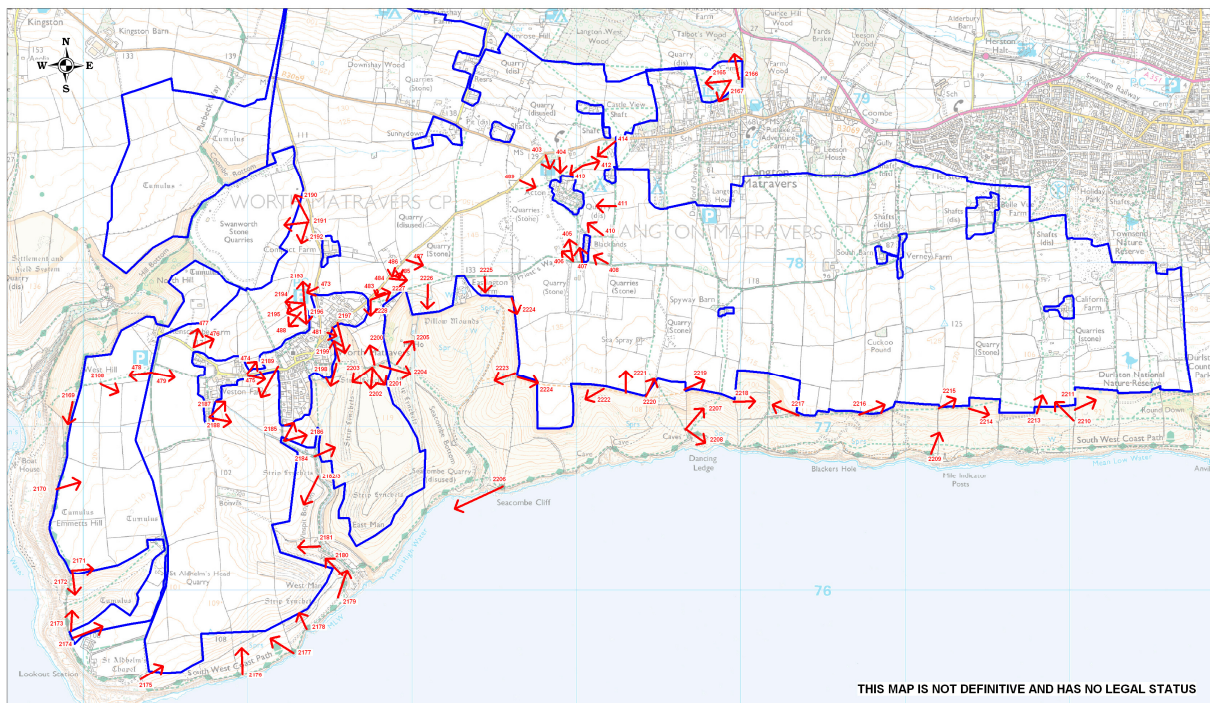
Cent Y: 77560

GEOGRAPHICAL INFORMATION SYSTEMS



© UK Perspectives 2002 & © Geomapping 2005 & 2009
© Crown Copyright 2011. OS License Number: 100019790

Plans 3, 4 & 5 Photo viewpoints




THIS MAP IS NOT DEFINITIVE AND HAS NO LEGAL STATUS

Purbeck Stone Resource Area

Landscape & Visual Sensitivity Study

Photo Viewpoints



 Stone Resource Area (Study Area)

Ref: Plan 4

Date: 09/11/2011

Scale 1:26000

Drawn By: ANH

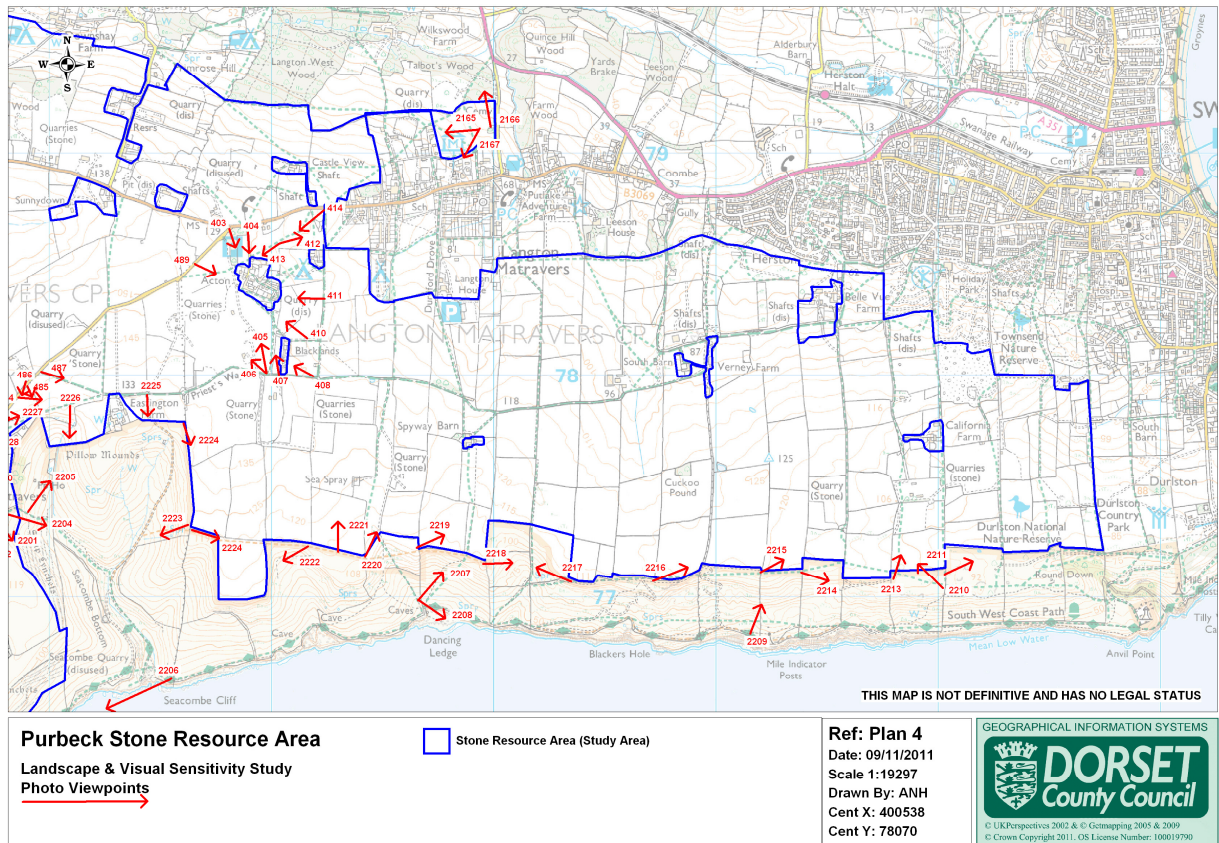
Cent X: 399203

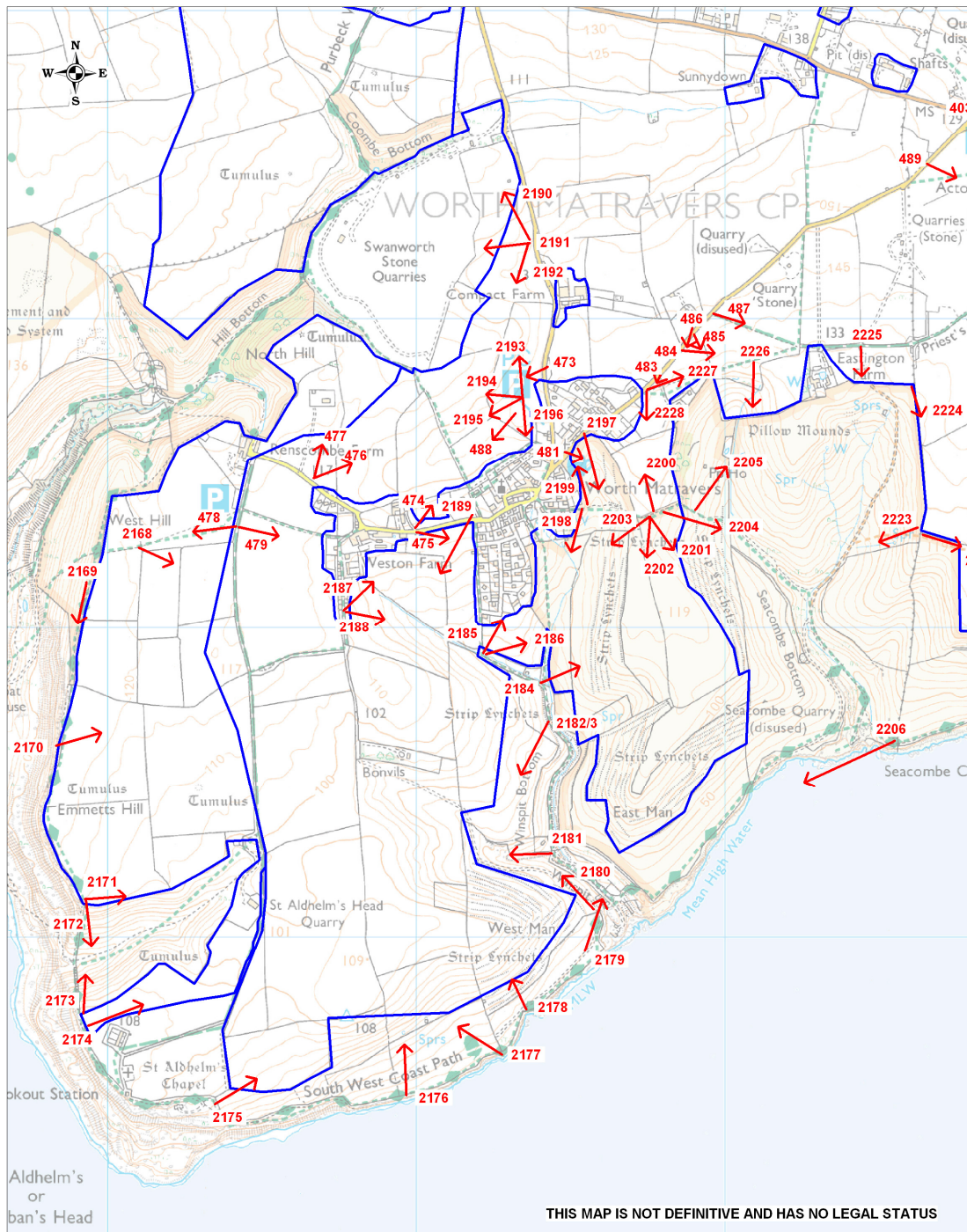
Cent Y: 77414

GEOGRAPHICAL INFORMATION SYSTEMS



© UK Perspectives 2002 & © Geomapping 2005 & 2009
© Crown Copyright 2011. OS License Number: 100019790





Purbeck Stone Resource Area

Landscape & Visual Sensitivity Study

Photo Viewpoints →

Stone Resource Area (Study Area)

Ref: Plan 5

Date: 09/11/2011

Scale 1:16000

Drawn By: ANH

Cent X: 397239

Cent Y: 77020

GEOGRAPHICAL INFORMATION SYSTEMS



© UK Perspectives 2002 & © Getmapping 2005 & 2009
© Crown Copyright 2011. OS License Number: 100019790

Natural Environment Team
November 2011